



**STAGE
ELECTRICS®**

CASE STUDY

**Royal
Shakespeare
Company**

Swan Theatre

TECHNICAL PRODUCTION
INFRASTRUCTURE UPGRADE



The Royal Shakespeare Company trusted Stage Electrics to provide electrical and audio-visual systems design, installation, and commissioning for a major refurbishment of the Swan Theatre in Stratford upon Avon.

Continuing a relationship forged over 30 years ago, the highly experienced team at Stage Electrics worked closely with the RSC to navigate a complex brief, with environmental sustainability and adapting the venue for emerging technologies at the heart of the requirements.

550

Days worked on site

14

Onsite specialists



The refurbishment of the Swan Theatre required teaming up with a specialist systems integrator who could guide us through the design process and manage the installation on site.

Stage Electrics ticked all our boxes, their experience of major theatre installations meant they added value at every stage of the redevelopment.

We were able to rely on both their physical ability to install and commission the systems, as well as their knowledge of complex installations in historical buildings.

Ben Ranner

Head of Technical Resources
Royal Shakespeare Company





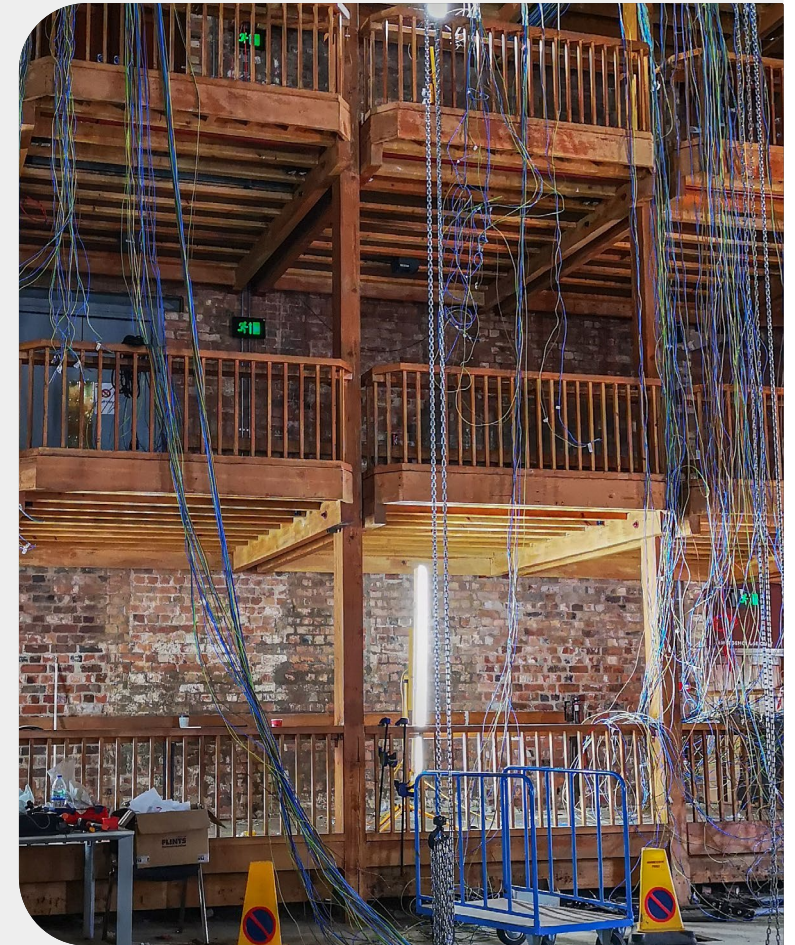
THE CHALLENGE

The closure of the Swan Theatre during the Covid pandemic in March 2020 fast-tracked a refurbishment, which had been planned for many years.

The catalyst for change was an out-dated rigging system, which prevented the Swan from reaching its full potential.

The plan was to transfer the weight of the production grid from the ceiling to the walls of the building, which would open up a larger space for more creative lighting and special effects.

Stage Electrics were tasked with redesigning the electrical systems infrastructure of the Swan, which would bring the theatre up to date technologically, whilst being budget-conscious and mindful of sustainability at every point of the refurbishment.



THE SOLUTION

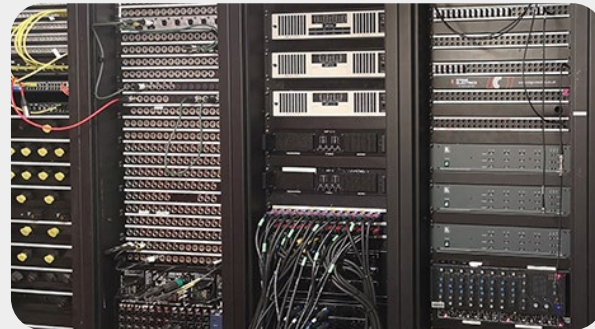
Stage Electrics provided custom-made technical solutions, installation, on-site project management, and commissioning services for the refurbishment of the Swan Theatre.

We refurbished or replaced 59 lighting facility panels and 33 sound facility panels. Our engineers commissioned over 700 electrical circuits throughout the venue, repurposing 50% of the existing wiring and installing an additional 18Km of power, audio, video, data, and fibre-optic cables to create an infrastructure which makes the Swan one of the most technically advanced and adaptable theatres in the UK.

In addition to the infrastructure, we specified, built, and installed control racks for lighting, audio, video, and stage management systems.

All racks used a combination of existing and new wiring, terminated, and tested at every tie line by a Stage Electrics engineer.

Our Project Manager Chris was based on site for the duration of the refurbishment, acting as a conduit between our engineers, the RSC and other contractors involved in the project. Having Chris at the heart of the project eliminated delays caused by challenges, sped up the flow of information and maximised our efficiencies onsite.



SPECIFICATION

- 517** Production lighting circuits
- 85** Lighting control points
- 122** Fibre optic lines
- 193** Ethernet lines
- 586** Microphone/audio tielines
- 96** Speaker outputs
- 118** 12G video lines
- 47** Cue light stations
- 3** Stage Management positions



THE RESULT

The successful completion of the refurbishment was down to two main factors: the value added by Stage Electrics and the close communication between the Royal Shakespeare Company and us throughout the project. Using our extensive knowledge and expertise, we were able to advise and support the RSC at every stage of the project, acting more like a specialist division of their own team than an external supplier.

The value added by Stage Electrics was determined by more than just cost. Factors like understanding client aspirations, budget management, the ability to create custom solutions and the quality of installation were all key considerations for Ben and his team at the RSC.



Stage Electrics were brilliant. Every time we encountered a challenge, they presented a range of solutions and helped us decide which was best for the project.

Their on-site engineers worked tirelessly to ensure we stayed on schedule and achieved our target of repurposing wherever possible.

Thanks to Stage Electrics, we have a world-class venue which can adapt easily to emerging theatre technologies. Our in-house technical staff at the Swan are now much more efficient—working smarter not harder, using the infrastructure specified and installed by Stage Electrics.

Ben Ranner

Head of Technical Resources
Royal Shakespeare Company

What Can We Do For You?

Stage Electrics provide technical services and products for venues and production companies.

We take care of our clients through the three specialist divisions of Stage Electrics: Projects, Equipment Sales and Venue Services.

Projects

Our Projects department facilitate projects like the Swan Theatre. Our experts will look after all your design, installation and commissioning needs for new-build and refurbishment projects. We work on installations of all scales, from village halls and schools to multi-million-pound projects like the Shakespeare North Playhouse in Prescott or Soho Place in London. Our Projects team are ready to help with as much or as little as you need us to do.

Equipment Sales

Stage Electrics support thousands of venues and professionals across the UK with their production technology and consumable needs. We stock products by over 100 manufacturers in our Bristol warehouse, many of which are available for same-day dispatch. Our online store is quick and simple to use. If you require personal assistance, our Equipment Sales team would be delighted to provide you with all the help and guidance needed to make a well-informed decision.

Inspection & Testing

Our Venue Services team will help you maintain a fully functional and legally compliant space. We provide tailored packages for electrical and mechanical inspection and testing. Stage Electrics are a LOLER, PUWER and NICEIC certified contractor; our engineers operate to guidelines within these accreditations. Our specialist onsite crew are highly qualified and DBS checked to enhanced level—the safety and functionality of your venue couldn't be in better hands.

**WE
MAKE
PERFORMANCE
POSSIBLE**



Let's Talk

If you'd like to learn more about our services, or to discuss an upcoming project you're working on, please get in touch.

03330 142 300

letstalk@stage-electrics.co.uk

www.stage-electrics.co.uk

